

VALKYRIE CONTROLS

2021 CATALOG

RHINO



VALKYRIE CONTROLS

ALLEN-BRADLEY

CONTROL SYSTEM	DIGITAL INPUT	DIGITAL OUTPUT	ANALOG INPUT	ANALOG OUTPUT	RTD INPUT	POWER OUTPUT	RELAY OUTPUT	SPARE MODULES	PRICE
Erik	1x 1756-IB16	1x 1756-OB16D						1x	C \$875
Frey			1x 1756-IF8H	1x 1756-OF8H				1x	C \$875
Iona					2x 1756-IRT8I			1x	C \$875
Gosta						1x 1756-OW16I	1x 1756-OX8I	1x	C \$875
Oli							2x 1756-OX8I	1x	C \$875
Vali					4x 1756-IRT8I			2x	C \$1075
Destin	1x 1756-IB16	1x 1756-OB16D	1x 1756-IF8H	1x 1756-OF8H				2x	C \$1175
Runa	2x 1756-IB16	2x 1756-OB16D	2x 1756-IF8H					2x	C \$1175
Tait			2x 1756-IF8H	2x 1756-OF8H				2x	C \$1175
Alva	2x 1756-IB16	2x 1756-OB16D	1x 1756-IF8H	1x 1756-OF8H				3x	C \$1475
Inkeri	3x 1756-IB16	3x 1756-OB16D						3x	C \$1500
Dag			3x 1756-IF8H	3x 1756-OF8H				3x	C \$1500
Dagni					6x 1756-IRT8I			3x	C \$1500
Viggo	1x 1756-IB16	1x 1756-OB16D	1x 1756-IF8H	1x 1756-OF8H	1x 1756-IRT8I		1x 1756-OB16D		C \$1625
Kari	4x 1756-IB16	4x 1756-OB16D						4x	C \$1750
Ase	2x 1756-IB16	2x 1756-OB16D	2x 1756-IF8H	2x 1756-OF8H	1x 1756-IRT8I			3x	C \$1900
Leif			4x 1756-IF8H	4x 1756-OF8H	1x 1756-IRT8I			3x	C \$1900
Tyr	2x 1756-IB16	2x 1756-OB16D	2x 1756-IF8H	1x 1756-OF8H	1x 1756-IRT8I		1x 1756-OB16D		C \$2050
Thora	2x 1756-IB16	2x 1756-OB16D	2x 1756-IF8H	2x 1756-OF8H	2x 1756-IRT8I		2x 1756-OB16D	1x	C \$2650
Halen	2x 1756-IB16	2x 1756-OB16D	2x 1756-IF8H	2x 1756-OF8H	2x 1756-IRT8I	1x 1756-OW16I	1x 1756-OX8I	4x	C \$2650
Kustaa	4x 1756-IB16	4x 1756-OB16D	4x 1756-IF8H	4x 1756-OF8H					C \$2925
Solvi	4x 1756-IB16	2x 1756-OB16D	4x 1756-IF8H	2x 1756-OF8H	2x 1756-IRT8I		2x 1756-OB16D		C \$3225
Odin	8x 1756-IB16	4x 1756-OB16D	8x 1756-IF8H	4x 1756-OF8H	4x 1756-IRT8I		4x 1756-OB16D		C \$6000

Available Modules:

Digital Input: 1756-IB16 (16-ch)

Digital Output: 1756-OB16D (16-ch)

Analog Input: 1756-IF8H (8-ch, w/ HART)

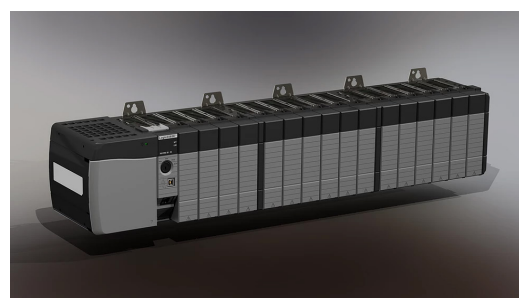
Analog Output: 1756-OF8H (8-ch, w/ HART)

RTD/Thermocouple Input: 1756-IRT8I (8-ch, isolated 3 and 4 wire)

Powered Output: 1756-OW16I (16-ch, 1A/point)

Relay Output: 1756-OX8I (8-ch isolated contacts)

1756-OB16D (16-ch isolated contacts)



VALKYRIE CONTROLS

NATIONAL INSTRUMENTS

CONTROL SYSTEM	PLC CHASIS	DIGITAL INPUT	DIGITAL OUTPUT	ANALOG INPUT	ANALOG OUTPUT	RTD INPUT	RELAY OUTPUT	PRICE
Magni	NI-9064					4x NI-9216		C \$1175
Asger	NI-9064	2x NI-9426	2x NI-9477					C \$1750
Singri	NI-9066			8x NI-9219				C \$1750
Eira	NI-9064			1x NI-9205 1x NI-9208	2x NI-9264			C \$1750
Gunnar	NI-9064	2x NI-9426	1x NI-9477				1x NI-9477	C \$2050
Jarle	NI-9066				2x NI-9264	2x NI-9216		C \$2650
Halvor	NI-9066	4x NI-9426	4x NI-9477	2x NI-9205 2x NI-9208				C \$2950
Ingemar	NI-9066			2x NI-9205 2x NI-9208	4x NI-9264	4x NI-9216		C \$2950
Dagni	NI-9066	2x NI-9426	1x NI-9477	1x NI-9205 1x NI-9208	1x NI-9264	1x NI-9216	1x NI-9477	C \$3075
Kory	NI-9066	4x NI-9426	2x NI-9477	2x NI-9205 2x NI-9208			2x NI-9477	C \$3500
Signi	NI-9039 NI-9149				4x NI-9264	4x NI-9216		C \$5000
Loki	NI-9039 NI-9149	4x NI-9426	2x NI-9477	4x NI-9205 4x NI-9208	2x NI-9264	2x NI-9216	2x NI-9477	C \$5850
Tarben	NI-9039 NI-9149	8x NI-9426					4x NI-9477	C \$6725

Available Modules:

Digital Input: NI-9426 (32-ch)

Digital Output: NI-9477 (32-ch)

Analog Input: NI-9219 (4-ch universal input)

NI-9205 (32-ch voltage input)

NI-9208 (16-ch current input)

Analog Output: NI-9464 (16-ch)

RTD/Thermocouple Input: NI-9216 (8-ch, 3 and 4 wire)

Relay Output: NI-9477 (32-ch, isolated contacts)



VALKYRIE CONTROLS

AUTOMATION DIRECT

CLICK ETHERNET SERIES

CONTROL SYSTEM	DIGITAL INPUT	DIGITAL OUTPUT	ANALOG INPUT	ANALOG OUTPUT	RTD INPUT	POWER OUTPUT	RELAY OUTPUT	SPARE MODULES	PRICE
Torin	2x C0-16ND3						6x C0-04TRS		C \$1025
Sten							8x C0-04TRS-10		C \$1025
Eske						4x C0-04TRS			C \$1325
Iver	1x C0-16ND3	1x C0-16TD2	1x C0-04AD-1 1x C0-04AD-2	1x C0-04DA-1 1x C0-04DA-2	1x C0-04RTD		1x C0-04TRS		C \$1900
Olin	4x C0-16ND3	4x C0-16TD2							C \$1900
Tue	2x C0-16ND3	2x C0-16ND3	2x C0-04AD-1 2x C0-04AD-2	2x C0-04DA-1 2x C0-04DA-2					C \$1900
Unn			4x C0-04AD-1	4x C0-04DA-1					C \$1900
Sven			2x C0-04AD-1 2x C0-04AD-2	2x C0-04DA-1 2x C0-04DA-2	4x C0-04RTD				C \$1900
Ove			2x C0-04AD-1 2x C0-04AD-2	2x C0-04DA-1 2x C0-04DA-2					C \$1900
Ragna					8x C0-04RTD				C \$1900

Available Modules:

Digital Input: C0-16ND3 (16-pt isolated contact)

Digital Output: C0-16TD2 (16-pt isolated contact)

Analog Input: C0-04AD-1 (4-pt current input)

C0-04AD-2 (4-pt voltage input)

Analog Output: C0-04DA-1 (4-pt current output)

C0-04DA-2 (4-pt voltage output)

RTD/Thermocouple Input: C0-04RTD (4-pt RTD)

Power Output: C0-04TRS (4-pt, 3A/pt)

Relay Output: C0-04TRS (4-pt, isolated commons, 7A/pt)

C0-04TRS-10 (4-pt, isolated commons, 10A/pt)



AUTOMATION DIRECT

PRODUCTIVITY 2000 SERIES

CONTROL SYSTEM	DIGITAL INPUT	DIGITAL OUTPUT	ANALOG INPUT	ANALOG OUTPUT	RTD INPUT	POWER OUTPUT	RELAY OUTPUT	SPARE MODULES	PRICE
Saga					4x P2-06RTD				C \$1175
Uffe					7x P2-06RTD				C \$1625
Ivar	1x P2-32NE3	1x P2-32TD2P	1x P2-16AD-1	1x P2-16DA-1					C \$1750
Kare	1x P2-32NE3	1x P2-32TD2P	1x P2-16AD-2	1x P2-16DA-2					C \$1750
Gyda			1x P2-16AD-1	1x P2-16DA-1					C \$1750
			1x P2-16AD-2	1x P2-16DA-2					
Hakon	2x P2-32NE3	1x P2-32TD2P					1x P2-32TD2P		C \$2050
Signy			1x P2-16AD-1	1x P2-16DA-1	3x P2-06RTD				C \$2200
			1x P2-16AD-2	1x P2-16DA-2					
Thyra	3x P2-32NE3	3x P2-32TD2P						1x	C \$2350
Selby	1x P2-32NE3	1x P2-32TD2P	1x P2-16AD-1	1x P2-16DA-1			1x P2-32TD2P		C \$2925
			1x P2-16AD-2	1x P2-16DA-2					
Soini	2x P2-32NE3	2x P2-32TD2P				1x P2-16TR	2x P2-32TD2P		C \$3075
Canute	2x P2-32NE3	2x P2-32TD2P	2x P2-16AD-1	2x P2-16DA-1	2x P2-06RTD		1x P2-32TD2P		C \$3800
Carr	2x P2-32NE3	2x P2-32TD2P	2x P2-16AD-2	2x P2-16DA-2	2x P2-06RTD		1x P2-32TD2P		C \$3800
Ylva	2x P2-32NE3	2x P2-32TD2P			2x P2-06RTD		1x P2-32TD2P		C \$3800
Calder	4x P2-32NE3	4x P2-32TD2P				1x P2-16TR	2x P2-32TD2P		C \$4250
Aslog			2x P2-16AD-1	2x P2-16DA-1	3x P2-06RTD				C \$4250
			2x P2-16AD-2	2x P2-16DA-2					
Egil	2x P2-32NE3	2x P2-32TD2P	2x P2-16AD-1	1x P2-16DA-1	2x P2-06RTD	1x P2-16TR	1x P2-32TD2P	1x	C \$4525
			2x P2-16AD-2	1x P2-16DA-2					
Hillevi	2x P2-32NE3	2x P2-32TD2P	2x P2-16AD-1	2x P2-16DA-1	3x P2-06RTD		4x P2-32TD2P		C \$4525
			2x P2-16AD-2	2x P2-16DA-2					
Even			3x P2-16AD-1	3x P2-16DA-1	3x P2-06RTD				C \$4525
			3x P2-16AD-2	3x P2-16DA-2					
Oydis	5x P2-32NE3	5x P2-32TD2P				1x P2-16TR	2x P2-32TD2P		C \$6000
Baldar	4x P2-32NE3	4x P2-32TD2P	4x P2-16AD-1	2x P2-16DA-1	4x P2-06RTD	1x P2-16TR		3x	C \$8600
			4x P2-16AD-2	2x P2-16DA-2					

Available Modules:

Digital Input: P2-32NE3 (32-pt sourcing)

Digital Output: P2-32TD2P (32-pt sourcing)

Analog Input: P2-16AD-1 (16-pt current input)

P2-16AD-2 (16-pt voltage input)

Analog Output: P2-16DA-1 (16-pt current output)

P2-16DA-2 (16-pt voltage output)

RTD/Thermocouple Input: P2-06RTD (6-pt RTD)

Power Output: P2-16TR (16pt, 1A/pt)

Relay Output: P2-32TD2P (32-pt)



PHOENIX CONTACT

CONTROL SYSTEM	DIGITAL INPUT	DIGITAL OUTPUT	ANALOG INPUT	ANALOG OUTPUT	RTD INPUT	POWER OUTPUT	RELAY OUTPUT	PRICE
Hilda	1x 2702783	1x 2688381	1x 2688064 (C)	1x 2688080 (C)				C \$700
Sune	1x 2702783	1x 2688381	1x 2688064 (V)	1x 2688080 (V)				C \$850
Bodil	2x 2702783	2x 2688381						C \$850
Toke			2x 2688064 (V&C)	2x 2688080 (V&C)				C \$850
Roar					4x 2688077			C \$900
Skuld	2x 2702783	2x 2688381	1x 2688064 (C)	1x 2688080 (C)	1x 2688077			C \$1300
Gorm	2x 2702783	2x 2688381	1x 2688064 (V)	1x 2688080 (V)	1x 2688077			C \$1300
Trygve	1x 2702783	1x 2688381	1x 2688064 (C)	1x 2688080 (C)	1x 2688077	1x 2700608	1x 2700608	C \$1300
Torsten	1x 2702783	1x 2688381	1x 2688064 (V)	1x 2688080 (V)	1x 2688077	1x 2700608	1x 2700608	C \$1300
Berit	4x 2702783	4x 2688381						C \$1450
Frej			4x 2688064 (V&C)	4x 2688080 (V&C)				C \$1450
Olya			2x 2688064 (V&C)	2x 2688080 (V&C)	4x 2688077			C \$1450
Rollo	2x 2702783	2x 2688381					4x 2700608	C \$1450
Inge	1x 2702783	1x 2688381	2x 2688064 (V&C)	2x 2688080 (V&C)	1x 2688077	1x 2700608	1x 2700608	C \$1550
Vilde	2x 2702783	2x 2688381	2x 2688064 (V&C)	2x 2688080 (V&C)	2x 2688077			C \$1700
Vivi	2x 2702783	2x 2688381	2x 2688064 (V&C)	2x 2688080 (V&C)	2x 2688077	1x 2700608	1x 2700608	C \$2000
Gisli	6x 2702783	6x 2688381						C \$2000
Ati			6x 2688064 (V&C)	6x 2688080 (V&C)				C \$2000
Birla	4x 2702783	4x 2688381	4x 2688064 (V&C)	4x 2688080 (V&C)				C \$2550
Dota	4x 2702783	4x 2688381	2x 2688064 (V&C)	2x 2688080 (V&C)	4x 2688077			C \$2550
Vedis	4x 2702783	4x 2688381	2x 2688064 (V&C)	2x 2688080 (V&C)	2x 2688077	1x 2700608	1x 2700608	C \$2550

Available Modules:

Digital Input: AXL F DI8/2 24DC 1F - 2702783 (8-ch)

Digital Output: AXL F DO8/2 2A 1H - 2688381 (8-ch)

Analog Input: AXL F AI8 1F - 2688064 (8-ch, voltage or current)

Analog Output: I/O module - AXL F AO8 1F - 2688080 (8-ch, voltage or current)

RTD/Thermocouple Input: AXL F RTD8 1F - 2688077 (8-ch, 2 to 4 wire)

Power and Relay Output: AXL F DOR4/2 AC/220DC 1F - 2700608 (4-ch, 8A/point)



VALKYRIE CONTROLS

Let's get in touch...

Our Engineers are available to answer any technical or troubleshooting questions regarding products, installation and future design updates. Customization on any catalog design is also available. You can learn more about our other pre-engineered control systems and standardized designs at www.valkyriecontrols.com.

Email: info@valkyriecontrols.com

LinkedIn: www.linkedin.com/in/valkyrie-controls

Valkyrie is committed to designing and manufacturing products in an environmentally responsible manner. Valkyrie recognizes that eliminating certain hazardous substances from our products is beneficial to the environment and to Valkyrie customers. Valkyrie Systems Inc. makes no express or implied warranties as to the accuracy of the OEM information contained herein and shall not be liable for any errors. U.S. Government Customers: The data contained in this manual was developed at private expense and is subject to the applicable limited rights and restricted data rights as set forth in FAR 52.227-14, DFAR 252.227-7014, and DFAR 252.227-7015.



VALKYRIE CONTROLS