

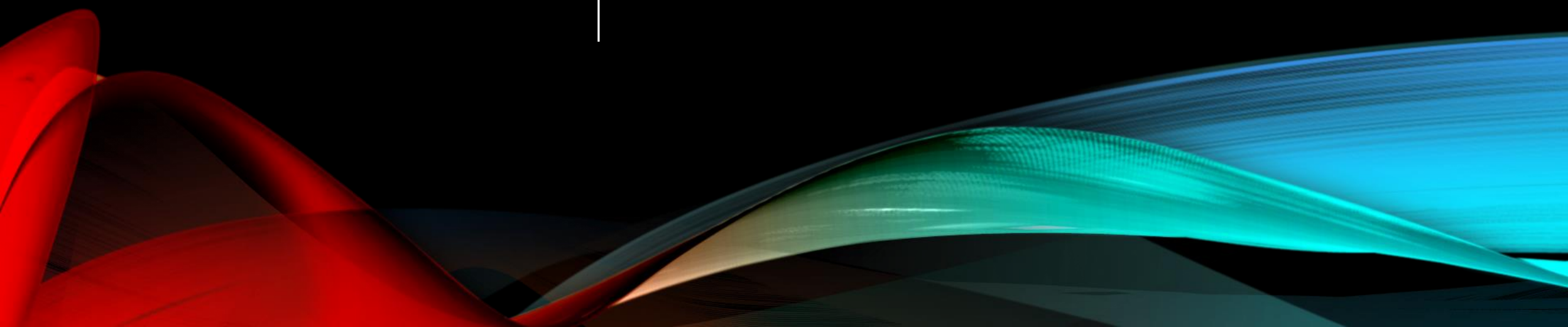


VALKYRIE CONTROLS™

Pre-Engineered Control Systems & Standardized Designs

Valkyrie's mission is to
standardize the
automation industry

MISSION




*Free up engineers & staff
to focus and drive
standardized innovation*

WHY?

by supplying
Pre-engineering controls
systems & designs

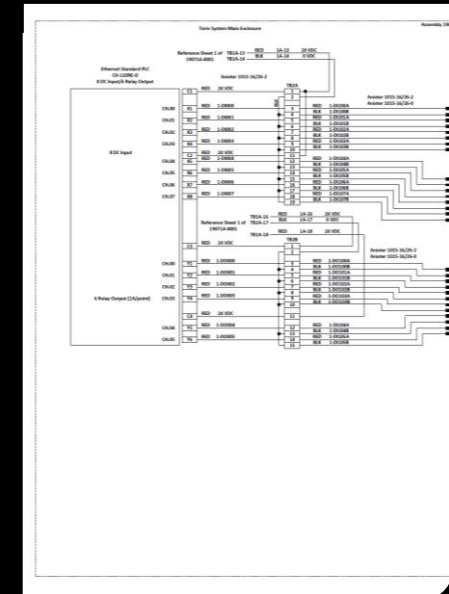
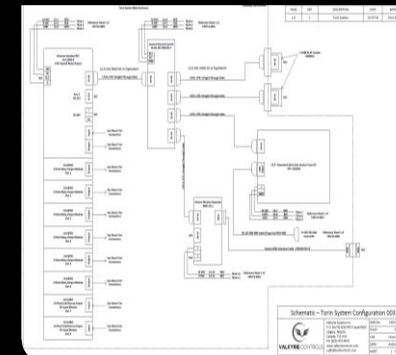
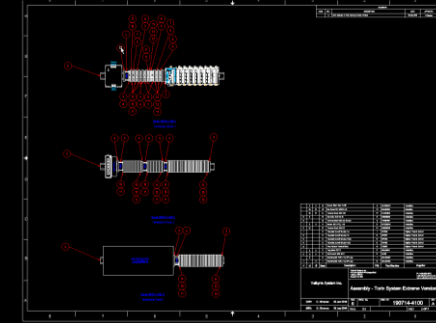
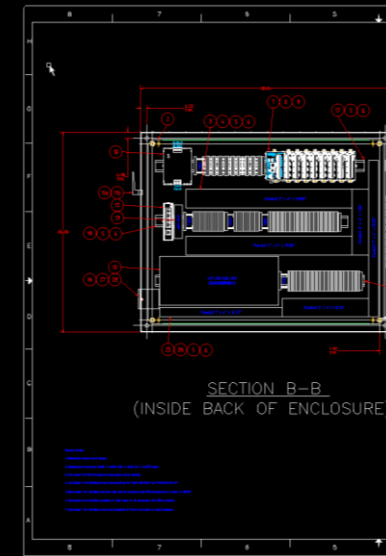
HOW?

- 
1. *Control system designs*
2. *Pre-Built control panels*
3. *Complete value solutions*

WHAT WE OFFER?

CONTROL SYSTEM DESIGNS:

- Valkyrie offers **affordable** control system & measurement designs for **any automation project**.
- Our designs are **UL & CSA compliant**.
- At a price which is typically **x5 more affordable**, than traditional from scratch designing.



VALKYRIE **ESTORE**

- Control system electrical designs are **available at our eStore**.
- These electrical designs offer the electrical implementation (schematics) for different PLC control panels.
- All our designs follow a standardized approach that ensures reliability, readability, and helps improve fabrication times.

Filter by

Collection

All

Pre-Built Industrial Panels

Allen-Bradley Schematics

NI Schematics

Automation Direct Schematics

Price

C\$875.00 C\$5,510.00

I/O Type

☐ Digital Input

☐ Digital Output

☐ Relay Output

☐ 24VDC Powered Outputs

☒ Analog Input

☐ Analog Output

☒ RTD Input


PLC Model

☐ cRIO (National Instruments)

☒ Controll...


Sort by

New Arrival




Electrical Design License:
SOLVI System
C\$3,225.00

New Arrival




Electrical Design License:
KUSTAA System
C\$2,925.00

New Arrival




Electrical Design License:
THORA System
C\$2,650.00

New Arrival



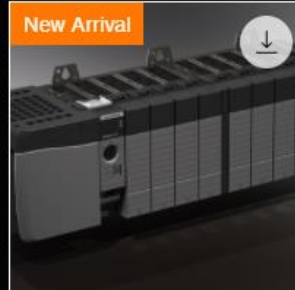
Electrical Design License:
LEIF System
C\$1,900.00

New Arrival



Electrical Design License:
ASE System
C\$1,900.00

New Arrival




Electrical Design License:
TYR System
C\$2,050.00

EXAMPLE: ODIN SYSTEM


- All our designs have a unique name for identification
- You can **request a detailed & personalized preview** of any electrical design directly from us.
- We are also able to **facilitate modifications** to the existing design, at **no additional cost**.

Home / Estore / Electrical Design License: ODIN System < Prev | Next >



**Electrical Design License:
ODIN System**

C\$6,000.00

[Add to Cart](#) 

[REQUEST A PREVIEW](#)

This document package includes the following:


- Electrical Schematic - ODIN System: Main (.pdf)
- Electrical Schematic - ODIN System: DC Power Distribution (.pdf)
- Non-Exclusive, Non-Transferable Lifetime License Certificate (.pdf)

LICENSING A PANEL DESIGN

- We offer **full previews** of our control design.
- We can accommodate required custom design changes, at no additional cost.

My Cart

[Continue Shopping >](#)




Electrical Design License: ODIN System

C\$6,000.00

1

[Enter a promo code](#)

[Add a note](#)



SSL SECURE SHOPPING
Your data is safe and secure.

Order Summary

Subtotal	C\$6,000.00
GST/HST ?	C\$300.00
Total	C\$6,300.00

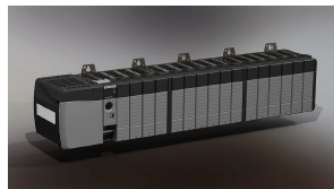
[Checkout](#)

ALLEN-BRADLEY

CONTROL SYSTEM	DIGITAL INPUT	DIGITAL OUTPUT	ANALOG INPUT	ANALOG OUTPUT	RTD INPUT	POWER OUTPUT	RELAY OUTPUT	SPARE MODULES	PRICE
Erik	1x 1756-IB16	1x 1756-OB16D						1x	C \$875
Frey			1x 1756-IF8H	1x 1756-OF8H				1x	C \$875
Iona					2x 1756-IRT8I			1x	C \$875
Gosta						1x 1756-OW16I	1x 1756-OX8I	1x	C \$875
Oli							2x 1756-OX8I	1x	C \$875
Vali					4x 1756-IRT8I			2x	C \$1075
Destin	1x 1756-IB16	1x 1756-OB16D	1x 1756-IF8H	1x 1756-OF8H				2x	C \$1175
Runa	2x 1756-IB16	2x 1756-OB16D	2x 1756-IF8H					2x	C \$1175
Tait			2x 1756-IF8H	2x 1756-OF8H				2x	C \$1175
Alva	2x 1756-IB16	2x 1756-OB16D	1x 1756-IF8H	1x 1756-OF8H				3x	C \$1475
Inkeri	3x 1756-IB16	3x 1756-OB16D						3x	C \$1500
Dag			3x 1756-IF8H	3x 1756-OF8H				3x	C \$1500
Dagni					6x 1756-IRT8I			3x	C \$1500
Viggo	1x 1756-IB16	1x 1756-OB16D	1x 1756-IF8H	1x 1756-OF8H	1x 1756-IRT8I		1x 1756-OB16D		C \$1625
Kari	4x 1756-IB16	4x 1756-OB16D						4x	C \$1750
Ase	2x 1756-IB16	2x 1756-OB16D	2x 1756-IF8H	2x 1756-OF8H	1x 1756-IRT8I			3x	C \$1900
Leif			4x 1756-IF8H	4x 1756-OF8H	1x 1756-IRT8I			3x	C \$1900
Tyr	2x 1756-IB16	2x 1756-OB16D	2x 1756-IF8H	1x 1756-OF8H	1x 1756-IRT8I		1x 1756-OB16D		C \$2050
Thora	2x 1756-IB16	2x 1756-OB16D	2x 1756-IF8H	2x 1756-OF8H	2x 1756-IRT8I		2x 1756-OB16D	1x	C \$2650
Halen	2x 1756-IB16	2x 1756-OB16D	2x 1756-IF8H	2x 1756-OF8H	2x 1756-IRT8I	1x 1756-OW16I	1x 1756-OX8I	4x	C \$2650
Kustaa	4x 1756-IB16	4x 1756-OB16D	4x 1756-IF8H	4x 1756-OF8H					C \$2925
Solvi	4x 1756-IB16	2x 1756-OB16D	4x 1756-IF8H	2x 1756-OF8H	2x 1756-IRT8I		2x 1756-OB16D		C \$3225
Odin	8x 1756-IB16	4x 1756-OB16D	8x 1756-IF8H	4x 1756-OF8H	4x 1756-IRT8I		4x 1756-OB16D		C \$6000

Available Modules:

- Digital Input: 1756-IB16 (16-ch)
- Digital Output: 1756-OB16D (16-ch)
- Analog Input: 1756-IF8H (8-ch, w/ HART)
- Analog Output: 1756-OF8H (8-ch, w/ HART)
- RTD/Thermocouple Input: 1756-IRT8I (8-ch, isolated 3 and 4 wire)
- Powered Output: 1756-OW16I (16-ch, 1A/point)
- Relay Output: 1756-OX8I (8-ch isolated contacts)
- 1756-OB16D (16-ch isolated contacts)



2020 DESIGN CATALOG

Our standardized designs can be reviewed and compared on our Design Catalog

PRE-BUILT CONTROL PANELS

- Pre-Built Control Panels are **complete industrial grade PLC panels** available for purchase
- These panels include **complete user manuals** for simple integration
- All pre-built panels feature standard **Ethernet/IP communication**
- Featuring **popular PLC brands** (i.e. Allen-Bradley, Automation Direct, National Instruments, etc.)



COMPLETE VALUE SOLUTIONS

- Complete control system design
- Control panel design & fabrication
- Engineering electrical schematic development
- Instrumentation & sensor selection
- Custom software & SCADA development
- Product development & standardization
- 2D & 3D CAD model development
- 3D model rendering & animation
- Data acquisition & measurement systems
- Industrial manufacturing & certification

VALUE PROPOSITION

*How our process creates
value for our customers.*



An abstract graphic on the left side of the slide, featuring a vibrant red background with flowing, ribbon-like shapes in shades of red and a hint of green at the top.

THE VALUE IN STANDARDIZATION

- Increased cost-savings (x5)
- Access to a large catalog of designs
- Faster development cycles
- Increase reliability & fabrication time
- Flexibility & choice in hardware platform
- Affordable custom designs with standardized templates
- Improved troubleshooting & maintenance



STARTING WITH A PROPOSED PROOF OF CONCEPT (POC)

- You provide the desired control system requirements (i.e. channel list, hardware platform, signal ranges, HIM, etc.)
- Valkyrie will supply a complete design using our standardized templates.
- Our package will include custom manuals, data sheets, parts list, 3D renders, fabrication estimates, etc.
- You can review the design, documentation, and quality.
- We will offer 20% discounted pricing over 2020 catalog pricing, with no commitment of purchase
- And fabrication pricing at cost
- The objective is minimum risk & maximum value potential for you on the proposed POC



*“We supply the control systems & designs needed to
create standardized innovation”*

-The Valkyrie Team

A FULL SERVICE TECHNICAL TEAM

WITH MINIMUM HASSLE, MAXIMUM
EFFORT AND GREAT IMPACT

Engineering Sales & General inquiries,
info@valkyriecontrols.com
or direct line: (403)-975-8976

Christopher Ximenez,
Founder & CEO/CVO
cx@valkyriecontrols.com

Corey Wilson,
Chief Operating Officer (COO)
corey.wilson@valkyriecontrols.com

Brandon Wong,
VP Research & Development
brandon.wong@valkyriecontrols.com

Andrew Wong,
Product Development Engineer
andrew.wong@valkyriecontrols.com
